



# Annual Report

St Margaret's Berwick Grammar

2020





# Content

- 3 School Council
- 4 Principal
- 5 VCE Outcomes
- 7 Finance
- 8 Early Learning and Junior School
- 9 Senior Schools
- 9 VCE Offerings
- 10 Academic Staff Qualifications



# SCHOOL COUNCIL



Fiona Templar  
President of School Council

In Australia we witnessed a multitude of responses to the pandemic from complete school closures for significant periods of time to 'business as usual' all of which have impacted on students, families and schools. Despite major challenges, the response of our teachers and school leaders reinforced the significant role they play in the lives of children and young people, their families and communities.

It was a year that revealed what lay beneath the surface and the St Margaret's Berwick Grammar Community demonstrated gratitude, generosity, humility, resilience, and persistence.

The opportunities for school leaders to ensure a responsive and targeted focus to digital pedagogies and literacy, access to information technologies and exploring contemporary forms of relevant assessment and data collection were challenging and we as a school are indebted to our leaders.

It is in times of adversity that character is revealed, and it is the view of Council that the school demonstrated its true colours and strength of purpose, as is evidenced by the achievements of the school: its students and staff.

Overseeing the management and the financial side of a school like ours has certainly had its challenges. Balancing the needs of all our stakeholders whilst ensuring a strong, viable financial future for the school was at the heart of every decision school council made.

During the year the school was at all times vigilant and disciplined in managing its costs and obligations, monitoring the cash flow, and ensuring efficient running – all the while committed to the very best provision of education continuity for all the students across all campuses.

I believe a strong united school council with a clear vision and a willingness to contribute positively is a feature of a successful school and I was so privileged to lead and work alongside such a talented and diverse group of people.

Fiona Templar  
President

## School Council Members

Mrs Fiona Templar  
CA; CPA; B. Bus (Acc)  
President of School Council  
Chair, Executive and Governance Committee  
Finance and Risk Management Committee  
Building and Grounds Committee  
SMS and BGS Foundation Limited

Mr Pino Stravalli  
CA; B. Bus (Acc)  
Deputy President of School Council  
Executive and Governance Committee  
Chair, Finance and Risk Management Committee  
SMS and BGS Foundation Limited

Mr Patrick Brennan  
Dip Building & Construction; Licensed Plumber; Dip Project Management  
Deputy President of School Council  
Executive and Governance Committee  
Finance and Risk Management Committee  
Chair, Buildings and Grounds Committee

Mr Graeme Bulte  
IAMA Certification; Probity Services Provider  
Finance and Risk Management Committee

Mr Dominic Elfick  
M. Sc; B. Sc (Hons) Agriculture

Mrs Shemane Nathanielsz  
B. Nursing  
Parents' and Friends' Association Representative

Mr Sam Pritchard  
Assoc Dip of Information Technology (Computing); Graduate of Australian Institute of Company Directors; Project Management Professional  
Finance and Risk Management Committee

Ms Amy Ridgway  
B. Sc (Aquaculture); M. Property  
Buildings and Grounds Committee  
Old Girls and Boys Representative

Mrs Julia Utan  
B. Eng (Mechanical and Computing); MBA



# PRINCIPAL'S REPORT



Annette Rome  
Principal

Dear Community,

I welcome you to the 2020 Annual Report.

In 2020 we faced the COVID challenge and relied on our school values more than ever: CURIOSITY to know and learn through exercising COURAGE: To do the right thing, CHARACTER: To be one's best self and RESPECT: To live wisely and compassionately with others and the planet.

During 2020, in spite of COVID, over 93% of items in the 2018 – 2022 Strategic Plan are initiated or completed. Key elements of the plan enacted in 2020 included the growth of ICT programs at the School and building the community, particularly in the face of COVID challenges. The focus on enrolments continued and 2020 saw enrolment growth in both the boys' and girls' senior schools.

Curriculum offerings are wide and varied culminating in over 35 VCE subjects available to students as well as the provision for completion of VET subjects and University Enhancement subjects. The cross-campus classes continued to attract students and enabled the provision of a broad range of subjects. The School was a finalist for the 2020 Innovation in Curriculum Awards (The Educator) with the Certificate of Global Responsibility. The School also received some of its best VCE results ever, with the Girls' school coming in the top 10 of all schools and the Boys' campus ranking in the top 10 schools for boys in Victoria. Both senior campuses are in the top 1% of schools in Australia according to Year 12 results. The online learning system, Firefly (NEXUS) was trialed for further roll out in 2021 and complemented the use of Microsoft Teams in the provision of curriculum during lockdown. In Junior School, 2020 saw the adoption of SeeSaw as well as other online learning opportunities for the younger students.

In 2020 the experiential learning programs were modified extensively due to COVID. For approximately 20 weeks of 2020 we were in lockdown. This enabled us to place an increased focus on wellbeing programs in response to societal concerns regarding the mental health of young people. The school was a trial school for SKODEL, an online wellbeing monitoring system subsequently adopted by many schools in Victoria. Other innovations included the establishment of the Wellbeing Hive (online) and the germination of a plethora of online and face to face clubs to build community and connectivity. Many of these were driven by students. The House system is recognized as a key element in the wellbeing management of young people and the students had opportunities to participate in a range of House competitions which moved online wherever possible. These events brought out the energy, excitement and empathy in the

students to achieve the best for their House and win the prestigious House Cup. Congratulations to Cunningham and Richards who finished top of the ladder in 2020 for the Senior Schools and Gipson and Campbell successful for Junior School in Cross Country/Athletics and the Jogathon respectively.

The performing arts moved effectively to an on-line space and individual music lessons and other activities continued successfully. The school facilitated the professional recording of 'The High School Musical' which received over 1000 views. Likewise attendance at other events such as Speech Nights and assemblies, which also had to move on-line, soared.

Our Early Learning Centre (ELC) continued to get healthy enrolments and positive feedback.

The Parents and Friends Association continued to support the School and, though their activities were compromised by COVID restrictions, they provided events such as Junior School sausage sizzles, Family Movie Night and the Themes and Dreams Festival. They also continued to support the Principal's Morning Teas, and were instrumental in the running of the highly popular teas that were presented in Mandarin.

The Senior Executive in 2020 comprised Annette Rome (Principal), Dr Steven Middleton, (Vice Principal), Ms Louise Sayar (Head of Junior School), Mr Nigel Halsey (Director of Engagement), Ms Pippa Birch (CFO until May 2020) and Mr Mark Janke (Director of Business Operations). In 2020 the School also appointed a Director of Risk and Compliance, Ms Noeleen Mazza.

2020 was a challenging year for everyone and it showed that the St Margaret's Berwick Grammar community is one of innovation, compassion and strength that sets high standards for all. Staff, students and the broader community were the living example of Virtute et Labore: With Courage and Effort.

Moving forward, we will continue to strive to be our best selves, now and in the future, for the betterment all humanity and the planet.

Annette Rome  
Principal

# VCE RESULTS

2020 was a year where the words 'pivot' and 'resilience' entered our everyday vernacular and nowhere was it practiced more than by our VCE students who showed their true character. In partnership and with the support of their dedicated teachers, they learnt more about themselves as learners, rising to the challenges of a new normal, displaying our values of Courage, Curiosity, Character and Respect.

Both Senior Girls and Senior Boys are in the top 1% nationally and St Margaret's Berwick Grammar remains the top academic school in the Berwick/Officer area.

## Senior Girls

- 28% of students achieved a study score over 40
- Median Study Score of 34
- Median ATAR 91
- 36% of students achieved an ATAR of 95 or above
- 52% of students achieved an ATAR of 95 or above
- 51% of students went on to study a STEM subject at university
- 84% of students were offered university place in their Top 3 course choices



Dux of Senior Girls  
Annie Wu  
ATAR 99.80

## Senior Boys

- 13% Percentage of students achieving over 40
- Median Study Score 31
- Median ATAR 85
- 27% of students achieved an ATAR of 90 or above
- 48% of students achieved an ATAR of 85 or above
- 44% of students went on to study a STEM subject at university
- 78% of students were offered university place in their Top 3 course choices



Dux of Senior Boys  
Oliver Ward  
ATAR 98.15

These results ranked the girl's school as a Top 10 School in the State and the boys as a Top 10 Boys School.

## Four Perfect Study Scores of 50 Were Achieved by:



Natalie Eu  
(Applied Computing : Data Analytics)



Haiyuo (JoJo) Zheng  
(English)



Abigail Johnson  
(Further Maths)



Amy Herbert  
(Health and Human Development)

## Other Significant Achievements:



Phoebe Thompson  
(Top Arts)



Haiyuo (JoJo) Zheng  
(Top Arts)



Sanya Verma (Yr 11)  
(Highest Score in the State for Hindi)



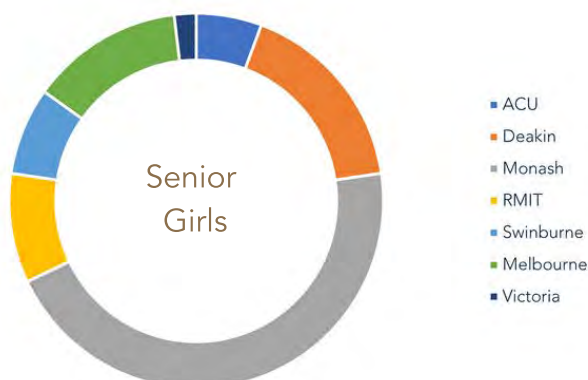
Ying Sim (Yr 11)  
(Top Dance)

We are proud of all our students and look forward to following the trajectories they take in life, with the same care and concern we felt for them at school.

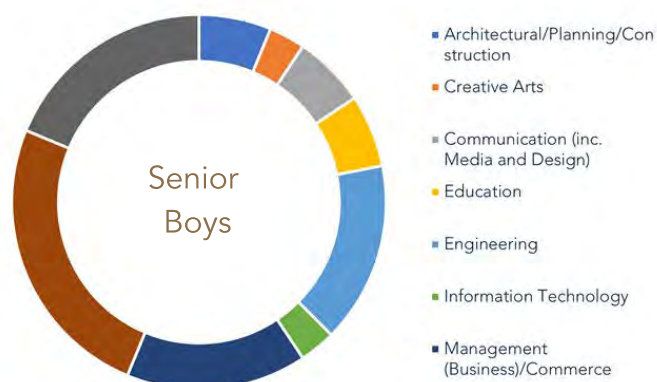
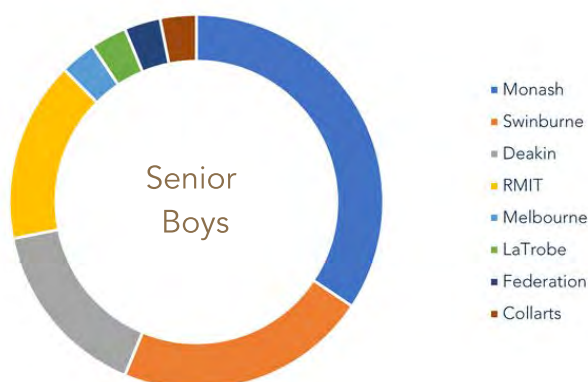
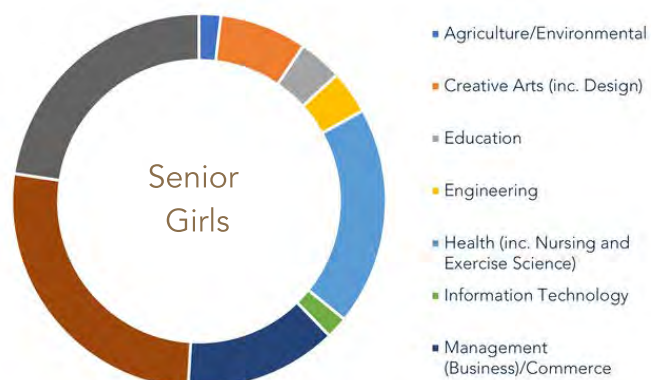
## Class of 2020 Tertiary Destinations and Fields of Study

All of our 2020 graduates have received offers from universities and colleges based locally, nationally and internationally and/ or an offer of full-time employment. Some offers include honour degrees and scholarship programs. Our students have selected a wide range of further learning opportunities.

### Tertiary Destinations



### Fields of Study



### Attendance and retention rate

Our whole school student attendance percentage for 2020 was 96.46%. Any unexplained absences are followed up by the relevant school section, through the house and homeroom attendance process.

- Whole School teaching staff attendance 2020: 97.47%
- Whole School teaching staff retention 2020: 92.61%
- Whole School Average class size 2020: 11.36
- Average VCE class size 2020: 9.78

### NAPLAN

Due to COVID-19 the National Assessment Program for Literacy and Numeracy (NAPLAN) was not administered.

NAPLAN is an annual National assessment for all Australian students in Years 3, 5, 7 and 9. All students in these year levels are expected to participate in tests for reading, writing, spelling, grammar and punctuation, and numeracy.

The content of each test is determined based on the National Statements of Learning for English and Mathematics which underpin state and territory learning frameworks. Questions are multiple-choice or require a short written response. The writing task required students to write a narrative piece.

NAPLAN tests provide a snapshot of students' literacy and numeracy skills as compared with the country's results. As NAPLAN data is based on single assessments, the information it provides would only be seen as a simple measure of student progress. More comprehensive assessments are provided by the school throughout the year in senior school and at the end of each semester in junior school.



# FINANCE REPORT



Mark Janke  
Director of Business Operations

## Finance and Risk Management

The School Council (Governance) in consultation with the Principal, Director of Business Operations and School Executive (Management) create the strategic direction for St Margaret's Berwick Grammar. The Finance and Risk Committee (FARM), a committee of the Council, has the role of setting the strategic financial direction of the school and supports the school management in achieving its financial goals. The FARM committee is chaired by Mr Pino Stravalli. This Committee is comprised of school councillors, Mr Graeme Bulte, Ms Fiona Templar, Mr Patrick Brennan and Mr Sam Pritchard. Membership to the committee is also extended to the school's Director of Business Operations and Principal, Ms Annette Rome.

Systems and procedures are continuously being reviewed and where necessary updated to ensure best practice is maintained. This ensures that the school complies with all its legal and regulatory requirements while striving for best practice in the areas of risk management, compliance with the requirements of the relevant authorities, debtor management and the annual budget review.

The 2020 workforce composition for St Margaret's Berwick Grammar comprised of 73.9 FTE academic and 42.4 FTE non-teaching staff, with one indigenous staff member for this period. Whole staff gender breakdown: 28% male and 72% female.

The School prepares its Annual Financial Statements in accordance with Accounting Standards and the Corporations Law, and these are externally audited by Accru Melbourne (Audit) Pty Ltd.

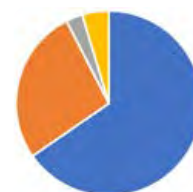
## Facilities Management

The strategic direction, including building, costing, maintaining and refurbishing of our buildings and facilities is the responsibility of the Buildings and Grounds committee, a committee of the School Council. This committee is chaired by Mr Patrick Brennan, and is comprised of school councillors Ms Amy Ridgway, Mrs. Fiona Templar. Membership of the Committee is extended to parents of the School, the School's Director of Business Operations Mark Janke, and the Principal Ms Annette Rome.

The School is fortunate to have a dedicated team of maintenance, grounds, cleaning and administrative staff who continue to exceed our high standards and to deliver the best possible facilities for our students.

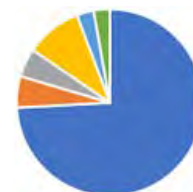
## St Margaret's School and Controlled Entity Year End 31 December 2020

Income	(\$'000)	%
Tuition fees	15,954	65
Grants	6,611	27
Contribution revenues	710	3
Other income	1,131	5



**Total income 24,406**

Expenditure	(\$'000)	%
Salary and related costs	17,451	74
Administration and general	1,275	5
Teaching materials	1,170	5
Depreciation	2,286	10
Buildings and grounds	691	3
Interest	660	3



**Total expenditure 23,534**

**Total surplus 872**

# ELC AND JUNIOR SCHOOL



Louise Sayar  
Head of Junior School

The 2020 year started well with pleasing enrolment numbers, a third Prep class, a refurbished Prep Centre, a makeover in the ELC foyer and new office for the Director. All scheduled Year 5 and 6 camps, interschool sporting events and excursions went ahead. Then the COVID-19 pandemic unfolded towards the end of Term 1, which thrust teaching and learning, as well as our community, into a state of uncertainty and disruption – the most significant in the history of education. We rode a carousel in 2020 of being in and out of distance learning but our School values of Courage, Character, Curiosity and Respect held us all in good stead and carried us through.

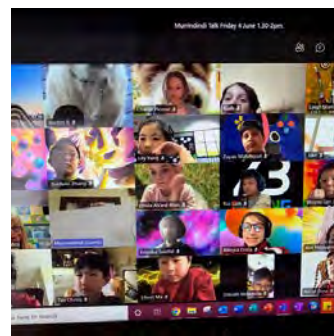
The Junior School and ELC teachers transitioned their classes into a fully online format and the Seesaw platform provided a consistent interface for students and parents. We also provided a Support School for Permitted Workers' children. Excursions, incursions, NAPLAN, interschool sport and our JS Musical production were cancelled but we forged our way ahead. Classroom and Specialist classes, group meetings, Parent Teacher Interviews, Information Evenings, Year 2 Strings and Year 5 Band presentations, fortnightly Virtual Assemblies, a stunning JS Shining Stars Performance evening and a Resilience Project parent webinar were all held online. Fortunately the ELC students eventually returned on site and online learning was abandoned.

We thank our School Captain team of Madeline Maher and Robbie Parker and Vice Captains, Sophie Arnott and Xander Makincovic. They were a formidable leadership team and were consistently good role models to the younger children. They helped drive the creation of a Junior School Time Capsule to remember this extraordinary year.

The Student Representative Council members from Year 2-6 are to be thanked for their efforts.

We welcomed to the staff: Mrs Eva Bukin, Ms Alison Stekelenburg, Mrs Danielle Forsyth and Mrs Elise Ryan returned from Maternity Leave. We acknowledge and farewell Mrs Judy Kneebone, Ms Courtney Rabl, Mrs Jasmine Jones and Mrs Lucinda McGrath for their service to the ELC and Junior School over several years.

Louise Sayar  
Head of Junior School





# SENIOR CAMPUSES



Dr Steven Middleton  
Vice Principal

Quite an incredible year was experienced by our community in 2020 as we confronted and overcame the challenges of intermittent and prolonged lockdown due to COVID-19.

Whilst we could let COVID-19 define the year, the reality is that the sum of 2020 in our Secondary School was so much more.

The academic results achieved by our VCE students were amongst the best VCE performances on record at the school. While these outcomes are a great testament to the hard work of our VCE students and their teachers, they are also a reminder and a reflection of the commitment to learning across all our school community.

Our students and staff had to pivot and reimagine the manner in which so many of our normal ceremonies and events occurred. The challenge to achieve this drove us into fresh and innovative spaces and also provoked changes in our thinking. Online parent teacher interviews were a success and our online Speech Nights and Assemblies added new flavour to tried and true formulas. Many parts of these new ways of doing these things will remain as expectations have changed across our community and we seek to blend the parts of our real and virtual events and ceremonies together.

We have also witnessed a change in the manner in which our community members literally and metaphorically “wrapped arms around each other” to support in challenging times highlighted the strength of purpose that exists both within and beyond the school gates.

It certainly was a year to learn from and remember!

Dr Steven Middleton  
Vice Principal



## VCE subject offerings 2020

Accounting	Legal Studies Literature
Biology	Further Mathematics
Business Management	Mathematical Methods
Chemistry	Specialist Mathematics
Computing - Informatics	Media
Economics	Music Performance
English	Physical Education Physics
English Language	Product Design and
Food Studies	Technology
Geography	Psychology
Health and Human Development	Studio Arts
History - Revolutions	Theatre Studies
Languages: Chinese	Visual Communication Design
Languages: French	VCE VET

\* subjects are offered based on student preferences and a minimum student participation rate. VCE VET subjects are offered off campus.

# 2020 ACADEMIC

## Staff Qualifications

Lydia Allen (Dr)	B A, Grad Dip (Monash), M A (Canada), PhD (USA)	Mark Easton	B A Massey (NZ), Dip Tchg (Auckland College Ed)
David Anderton	B Ed, B App Science (Deakin)	Susan Eden	Dip T Early Childhood (Melbourne)
Elizabeth Anderton	B Arts (Deakin)	Karryn Exner	B Early Childhood (Melbourne), Grad Dip T Prim (Monash)
Greg Ashcroft	B Arts (Wilfrid Laurier Uni, Canada) Grad Dip Ed Sec (Deakin)	April Fan	B A (China), M Ed (NZ)
Jacqueline Atkins	B App Sc, B Ed (Deakin)	Nicola Farmer	B Ed (Melbourne C A E)
Paul Atkins	B App Sc, B Ed (Deakin)	Janine Fatouros	Grad Dip Ed (Monash), Grad Cert Literary Studies (Deakin), B A Criminal Justice Admin (RMIT)
Kate Bartholomeusz	B Ed and Grad Dip Ed (Deakin)	Rebecca Fernandes	B Arts, B Ed, Cert IV English as a Second Language, Prof Cert in Adolescent Counselling Prof Cert of Coaching for Educational Leaders
Rosetta Batsakis	B App Sci (RMIT), Grad Dip Ed Sec (ACU), Grad Dip Ed It Educ (Deakin)	Adrian Fisers	B Ed (Arizona State Uni), Grad Dip Ed Policy and Administration (Monash)
Sally-Anne Battye	B Ed (Rusden)	Karen Fisers	B Ed, M Ed St (Monash)
Damien Bell	B Design Industrial (Swinburne), B Design (Hons; Swinburne), Post Grad Dip Ed Sec (ACU)	Kate Flood	B A, B T (ACU)
Carolyn Bennett	B A (Deakin), Grad Dip Ed Sec (Monash)	Fiona Foreman	B Ed Social Science (Newcastle)
David Bennett	B Physical Education (Deakin)	Danielle Forsyth	B ECS (Melbourne), Grad Dip Ed Primary (Monash)
Emily Bermingham	B Mus Ed, M Mus Ed (Arizona State Uni)	Meg Fortington	M Ed (Monash), B Ed (Melbourne)
Gerard Bourke	B App Sci (RMIT), Grad Dip Ed (ACU)	Deborah Francis	B A, Dip Ed (Monash), Grad Cert Adolescent Counselling (Monash)
Rachel Bourke	B Ed (Deakin)	Elizabeth Freemantle	B A Mus (VCA), Dip Ed (Melbourne), A Mus A
Diana Bright	B Ed (Rusden)	Laetitia Gerard	B Teaching (Primary and Secondary) (Deakin), B Fine Arts (Monash), Cert IV Youth Work (Swinburne)
Nicholas Bruton	B Exercise Science and Human Movement (Vic Uni), Grad Dip Ed (ACU)	Louise Gerrard	B A, Dip Ed (Monash), M Ed (USQ)
Eva Bukin	B Arts (Victoria), B Teaching (Melbourne), M Ed Inclusive and Special Education (Monash)	Melissa Graham	B Ed (Vic College Burwood), Dip T (Primary), B A (Hons), Grad Dip Ed (Monash)
Debbie-rae Cameron	B Ed, B App Sc (Deakin)	Sherril Gurney	B A (Hons; La Trobe), Grad Dip Ed Prim (Monash)
Stewart Cameron	B A (Uni WA), Dip Ed Sec (Monash)	Tracey Hallam	B Soc Sc (RMIT)
Joanne Cardullo	B Ed (Melbourne), M Ed Special Ed (Deakin) Grad Cert Ed Research (Monash)	Sophie Healy	Dip T (Vic College Burwood)
Alice Carlisle	B Ed Sec (Deakin) B App Sc (Deakin)	Andrew Hibbins	B Ed (Vic College), Ad Cert Cordon Bleu Cookery (UK), Cert II Hospitality (HEV), Cert IV Workplace Training (Chisholm)
Alana Cary	B Ed Prim (ACU)	Mary Holstock	B A (Monash), Dip Ed (Melbourne)
Gada Chazbek	B A (Vic College), Dip Ed (Monash), Cert IV Workplace Training and Assessment (Chisholm)	Darragh Howard	B Ed Physical Education (Deakin University)
Scott Chittenden	B A (Rhodes), Post Grad Cert Ed (UNISA), Dip Sports Management (Boston City Campus, South Africa)	Camille Hudson	B A (Monash), Dip Ed (Rusden)
Glenda Clarke	Dip T, Grad Dip Sepc Ed (Deakin)	Sally Huglin	B A (Monash), B Sci (Monash), B T Primary and Secondary (Deakin)
Zoe Clark	B Sc (Hons; Melbourne), Dip Ed (Monash)	Bronwyn Huisintveld	B A (Durham), Post Grad Cert Ed (Reading)
Lyndsay Cliffe	B A (Auckland NZ), Dip T (Auckland Teaching College)	Kelly Johnson	Dip Childs Services
Sandra Coburn	B Visual Arts, B Ed Primary (Monash)	Jasmine Jones	B Ed Primary Education (Monash), M Ed Educational Leadership (Monash)
Jennie Cockburn	Dip Ed (Melb State College), Grad Dip Librarianship (Melb State College)	Andrew Kreibich	B Sc, Dip Ed (Monash)
Jo Cooke	B Ed (Deakin)	Heather Landman	B Ed (Vic College)
Lauren Cook	B Arts, M Ed	Andrew Lardner	B Sc (Deakin), B Ed Sec (Deakin), Adv Dip of Engineering (Principal Technical Officer) (Mechanical/Manufacturing) (RMIT)
Katie Cooper	B Ed, BT Primary (Deakin)	Ramona Lazar	B Arts (Monash), Grad. Dip. Ed. Secondary (Monash)
Szilvia Costello	B Ed, B Arts (Monash)		
Oliver Cross	BSc (Durham), Grad Cert Ed (Kingston)		
Meredith Crowden	Dip T (Melb State College), B Ed (Melb College of Adv Education)		
Michelle Cugley	B Arts (Vic Uni), B Ed Prim (ACU)		
Bev Dawes	B Bus (Monash), Grad Dip Ed (Hawthorn Institute of Education, Certificate IV in Career Development (Swinburne)		
David Diston	Dip T (Melbourne), B Arts (La Trobe)		
Karen Dreher	M Ed Literacy (Monash), Grad Dip Psych (Monash), B Arts Hons (Monash), Dip Ed (La Trobe)		
Mark Dunstan	Higher Dip T (Rusden)		



Darren Lay	B App Sci (La Trobe), Grad Dip Ed Primary (Monash)	Belinda Schreurs	B Ed (Vic College Rusden)
Yvette Leach	B Music (Monash), Grad. Dip Ed (Primary and Secondary) (Monash)	Linda Shardlow	B Sc, Dip Ed, M Ed (Melbourne)
Delanie Lewis	B Ed Sec (Canberra)	Nick Simpson	B Sc (Hons; Manchester Uni UK), PGCE (Leeds Carnegie, UK)
Xiaoxiao (Sabrina) Li	M Ed (Monash), Grad Dip (RMIT), B Art (Nanjing Uni)	Meral Simsek	B Arts (Victoria University), Grad Dip in Ed (Monash University)
Roxanne Liemareff	B Biomedical Science, M Teaching (Primary and Secondary)	Allison Stekelenburg	BA (Macquarie), Dip Ed (Macquarie), M International Ed (New England), CELTA TESOL (Australian College of English)
Melissa MacEoin	B Sc (Monash), B Arts (Monash), Grad Dip Ed (Sec) (Melbourne), M Ed (Monash)	Nina Stevanovic	B BehSc (La Trobe), PG Dip Psych (Monash) M Psych (Melbourne)
Jodie McCarthy	B Early Childhood (Melbourne) Certificate 4 Careers Education and Development (Swinburne)	Sue-Ann Stibbard	B Social Science (La Trobe University), Cert 3 Children Services
Phillip McConchie	B Ed (Monash), Dip T (Primary)	Whitney Stiles	B A, B Ed (Monash)
Helen McDonald	B Sci Ed (Melbourne)	Di Tan	B Design (Hons, RMIT), M T Primary (Melbourne)
Laurie McDonald	B Sci Ed (Melbourne), Grad Dip (Monash)	Tina Taranto	B Sc (Hons; Melbourne), Dip Ed, Grad Dip Computing (Monash)
Danielle McDowell	B Ed (Sec) (Rusden)	Gregory Taylor	BSc (Monash University), Grad Dip Ed (La Trobe)
Allison McEaney	B Ed Sec (Deakin), B T Prim (Charles Sturt)	Judy Taylor	B Ed Sec (Arts), Grad Dip Drama Ed (Melbourne), Grad Dip Media Studies (Victoria College), Grad Dip Information and Communication Technology (Hawthorn Institute of Education), Grad Dip Student Welfare (Melbourne), Post Grad Certificate in Education Careers (ACU), Cert IV Workplace Training and Assessment (Vocational Pathways Ripponlea), M Arts (Monash)
Lucinda McGrath	B Early Childhood Teaching (Monash)		B Industrial Design Hon, Dip Ed (Monash)
Steven Middleton (Dr)	B A, Dip Ed, M Ed (Melbourne), M Bus M (Deakin), D Ed (Melbourne)		B A, M T Secondary, Grad Certificate Arts Creative Writing (Melbourne)
Jo Mitchell	M Ed (UNE)	Stelian Tchapkanski	B Sc, Dip Ed (Monash)
Amanda Neil	B A, Dip Ed (Monash)	Mary Clare Terrill	B Music, Grad Dip Ed (Secondary), M Ed Leadership (Candidate)
Jodie Norling	Dip T (Inst of Catholic Ed), Grad Dip Early Childhood (Monash)	Sharyn Uteda	Dip T (Melb State College), Dip PE, Ass Dip Opera (Melbourne)
Cheryl O'Gallagher	B Com (Melbourne), Dip Ed (Melbourne State College)	Marten Visser	B Ed Primary, Dip Children's Services
Sarah Pay	B Ed (Vic College Rusden)	Jenny Wakefield	B Science and Education (Honours)
Natalie Petruccelli	B A, Grad Dip (Monash), Dip Ed (Melbourne)	Brodie Wallace	B A (Hons), University Ed Dip (Rhodes Uni SA)
Sean Pieper	B A, Grad Sip Sec (Monash)	Jingyu (Yrena) Wang	B Ed, B App Sc (Deakin)
Simon Powys	B Sc, B Eng, Grad Dip Ed	Marianne Welton	B Des (RMIT), Grad Dip Ed Early Childhood (Monash)
Achini Ratnayake	B Arts (Insurance) (New Delhi), A Dip Business Administration (ABE UK), Dip Children Services (Early Childhood Education and Care) (VISEG Melbourne).	Brooke White	B Ed Primary (Deakin)
Ruth Rae	B Ed (Sci), Associate Dip (Sci)	Nicole Whitney	M Ed IB (Melbourne)
Jose Rault	B App Sc (RMIT), M Teach (Melbourne)	Amy Wishart	M Ed, Grad Dip Ed, M Finance, Grad Dip Applied Information Systems (Melbourne)
Fiona Reed	Dip Children's Services Education and Care (Chisholm)	Robbie Xin	
Stacey Reid	B Teaching (Early Childhood) (Monash)		
Peter Robertson	B A, Grad Dip Ed (Primary), M Ed (Leadership, Policy and Change)		
Louise Robinson-Lay	B Arts, Grad Dip Ed (Teaching), M Ed (Educational Leadership) (Monash)		
Annette Rome	B Sc (Hons), Dip.Ed, PhD (in progress) (Melbourne) FACE, FACEL		
Elaine Rogers	BA, Grad Dip Ed (Sec) (Monash)		
Jessica Ruddle	B Ed (Early childhood and Primary) (Deakin), Dip Early Childhood Ed and Care		
Ron Ruzzier	B Arts, Grad. Dip of Adult Education and Training, Grad Dip of Education (Secondary), M Ed (Boys Ed)		
Elise Ryan	B Music (Conservatorium Melbourne), Grad Dip Teaching (La Trobe)		
Tracey Sawyers	B Nursing (Fed Uni), M Teaching (Early Childhood Education) (Deakin)		
Louise Sayar	B Ed, M Ed (Gifted and Talented), Dip Teaching (Primary)		
Thomas Schinck	B Health and Physical Ed with Mathematics (Deakin)		



**St Margaret's  
Berwick Grammar**

VIRTUTE ET LABORE  
1926

**Post**  
PO Box 138  
Berwick, Victoria, 3806  
Australia

+61 (0)3 9703 8111  
[info@smbg.vic.edu.au](mailto:info@smbg.vic.edu.au)  
[stmargarets.vic.edu.au](http://stmargarets.vic.edu.au)

**Berwick Campus**  
27-47 Gloucester Avenue  
Berwick, Victoria, 3806  
Australia

**Officer Campus**  
80 Tivendale Road  
Officer, Victoria, 3809  
Australia